



National Teaching School  
designated by  
  
National College for  
Teaching & Leadership



# St Patrick's RC High School

## A National Teaching School

**AMAZING THINGS HAPPEN HERE**

# Primary Course





# Schools Direct Teacher Training Programme

[Teachingschool.stpats@salford.gov.uk](mailto:Teachingschool.stpats@salford.gov.uk)

Schools Direct  
Primary Course

ST. PATRICK'S  
— Roman Catholic High School —

OUR LADY & ST JOHN  
CATHOLIC COLLEGE

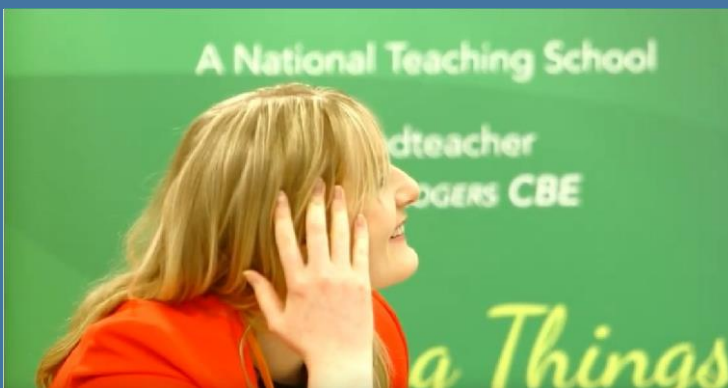


## Meet Our Trainees



**“I really enjoyed looking back at the start of the year, knowing very little about teaching . 12 months later, I have developed into this teacher that has her own classroom and personal teaching style”.**

**“I think the personal touch that St Patrick’s has as a Teaching School is really fantastic. I train with a core group of people on a regular basis and the support I get from my mentors is absolutely great”.**



**I did spend some time at university however, I spent more time in the class room in comparison to university led courses. This was great for me as I wanted as much time in the classroom as possible.**



# Schools Direct Primary Course

ST Gilbert's RC  
PRIMARY SCHOOL



Holy Cross and All Saints  
RC PRIMARY SCHOOL



St Joseph the Worker  
RC PRIMARY SCHOOL



St Mary's  
R.C. Primary School



St Teresa's  
RC PRIMARY SCHOOL



St Philip's  
RC PRIMARY SCHOOL



The most important outcome of our programme is that you have the skills and knowledge to make a difference to young people by becoming an effective teacher.

Our teacher training course is a foundation for a fulfilling, wonderful career - not an end point but rather the start of a journey that will change you forever.

After our teacher training course ends you will have the confidence to continue to challenge yourself and to reflect upon and refine your teaching.

During the year you will discover the joy and love of learning that comes from working in education, celebrating your own successes and those of the pupils in your care.

St Teresa's  
RC PRIMARY SCHOOL



What are the main differences between our School Direct course and a university led programme?

On our School direct programme our primary school partners are more involved with your training.

You are part of a smaller number of trainees allowing bespoke support and training provision

Unlike a university led course, on a school direct programme:

Our primary schools interview and select our trainees

ST. PATRICK'S  
— Roman Catholic High School —

OUR LADY & ST JOHN  
CATHOLIC COLLEGE



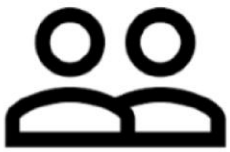
You spend longer working with existing primary school teachers

Your course is developed by practitioners working in classrooms today – they lead training and visit you in school.

The schools are an integral part of the course not just a placement school.

## Schools Direct Primary Course

### What Makes Us Different?



Mentor  
from the  
Lead school



University  
Mentor



Subject  
Mentor



Training at the  
Lead School



Training in  
primary  
schools



12 Days at  
Liverpool  
Hope

Expert support across the year from a dedicated ITT development tutor.  
There is always someone to help you

Academic 1-1 support

Support in schools

Daily support from the classroom teacher that you work with

A teacher to help develop you and give you 1-1 support

Research informed sessions

How to teach and the curriculum content

The life of a teacher from the classroom, to the staff room to school trips

Learn the theory and then watch it in action



Reflect and discuss ideas with expert primary teachers and leaders involved with your training

University training to support your PGCE and academic writing for your Masters



# Schools Direct Primary Course

## About The Programme

On our School Direct Course you will have the opportunity to work in two contrasting placement schools. This means that by the end of the year you will be fully equipped with the skills needed to work in any school. You will have the understanding needed to continue your professional development, foster your own passion for learning and be happy and successful in your teaching career.

During your training year you will receive outstanding professional issue sessions provided by staff working in a National Teaching School and across our family of Alliance Schools. This research based training ensures that you have an effective understanding of Teaching and Learning so that you can make a real difference in your own classrooms.

You will have the opportunity to continue to develop your own subject specific knowledge, linking this to the wider curriculum. The Saint Patrick's School Direct course includes 12 days of intense, focused, subject specific input from our partner University.

Liverpool Hope University have a Gold Standard in Teaching Excellence, ensuring that you always receive the very best training during your teaching year. These university sessions also provide you with an additional chance to network and share outstanding practice across Initial Teaching Training cohorts. As well as your QTS and PGCE you will receive 60 masters credits on our Schools Direct course.



## Schools Direct Primary Course

# Supporting You On Your Journey

**The University:** You will have a Subject Tutor who is an expert in your subject to help develop your knowledge of your curriculum. Both the Subject Tutor and the Lead School will make visits you in school. You will also work with an academic subject tutor who will support you in the assignments aimed at Masters level. This will be invaluable in ensuring that you are successful with the academic programme.

**The Placement Schools:** The placement school will provide you with a Professional Mentor to train and support you in the school and have an overview of your progress.

**A Subject Mentor:** this will be a class teacher who will mentor and coach you. They will help you on a daily basis during placements to put the theory into practice.

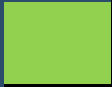





**Other Trainees:** The Saint Patrick's trainees become a family and the sessions are designed to help you share best practice and support each other.





Many of our trainees continue to share and work together into the NQT year and beyond.

## Your Training Year

		Training at St Patrick's Teaching School
		Training at St Teresa's Primary School (partner school)
		Training at University
		Block A Placement School (in the classroom)
		Block B Placement School (in the classroom)



# Example Calendar

26/08/2017	<b>Bank Holiday</b>				PPL1 Up to 50% teaching
02/09/2019				Induction day	University day 1
09/09/2019	IPD – BOTH 1	ENG 1			Early warning system
16/09/2019	IPD – BOTH 2	MATHS 1			
23/09/2019	IPD – BOTH 3	ENG 2			
30/09/2019	IPD – BOTH 4	Maths 2			University day 2
07/10/2019	IPD – BOTH 5	F1 Foundation Subj			
14/10/2019	Secondary Visits	F2 Foundation Subj			
21/10/2019		F3 Foundation Subj		23 days	University day 3
28/10/2019	<b>University half term (w.c 28.10.19) PPL1 50%</b>				
04/11/2019	PPL1 Up to 50%	F4 Foundation Subj			
11/11/2019		F5 Foundation Subj			
18/11/2019		F6 Foundation Subj			
25/11/2019	UDS - Safeguarding conference	F7 Foundation Subj			
02/12/2019		F8 Foundation Subj			progress REVIEW 1
09/12/2019		F9 Foundation Subj			EYFS
16/12/2019	University day 6	EYFS	EYFS	EYFS	EYFS Assignment 1 due
23/12/2019	<b>University Christmas break (23.12.19 – 5.1.20) PPL 2 – 60% teaching</b>				
30/12/2019					



# Example Calendar

06/01/2020	University day 7	SCI1	SCI2	SC3	Ind day Block B
13/01/2020		ENG 3			IPD6 Pri
20/01/2020		Maths 3			
27/01/2020		F10 Foundation Subj			
03/02/2020					
10/02/2020	University day 8				
17/02/2020	Half term				
24/02/2020	IPD 7 PRI				University day 9
02/03/2020					
09/03/2020					
16/03/2020	UD 10 - Progress for all conference				progress REVIEW 2
23/03/2020					
30/03/2020	SEND	SEND	SEND	SEND	SEND
06/04/2020	University Easter break ( 8.4.19 – 21.4.19) PPL3 80%				
13/04/2020					
20/04/2020	IPD 8 PRI				Assi 2 due (VIVA)tbc
27/04/2020	UD11 - G to O conference				
04/05/2020	Bank Holiday				
11/05/2020					Progress check review
18/05/2020					23
25/05/2020	Half term				
01/06/2020	UD 12 – NQT (VIVAS) TBC				
08/06/2020	School profiling				
15/06/2020	School profiling				Final review
22/06/2020	School profiling				
29/07/2020	IPD 9 Both			22	IPD 10 Both



# 132 days classroom experience

## What do I need?

### **PGCE Primary School Direct:**

A degree classification of 2:2 or above

GCSE C or above in English, Maths and Science (or equivalent)

---

## How do I apply?

1. Apply to the St Patrick's School Direct Course through the UCAS teacher training system: [www.ucas.com/apply/teacher-training](http://www.ucas.com/apply/teacher-training)

You can view our courses by searching for St Patrick's Greater Manchester Alliance in the UCAS search engine:

If you are not sure how to apply on UCAS this watch this video explaining it step by step: <https://www.youtube.com/user/UCASonline>

---



# St Patrick's RC High School

## A National Teaching School

**AMAZING THINGS HAPPEN HERE**

ST. PATRICK'S  
— Roman Catholic High School —

OUR LADY & ST JOHN  
CATHOLIC COLLEGE

56 NEW LANE, ECCLES, MANCHESTER M30 7JJ T- 0161 921 2300 E1: [stpatricks.rchighschool@salford.gov.uk](mailto:stpatricks.rchighschool@salford.gov.uk)  
E2: [teachingschool.stpats@salford.gov.uk](mailto:teachingschool.stpats@salford.gov.uk) [www.stpatricksrhigh.co.uk](http://www.stpatricksrhigh.co.uk)